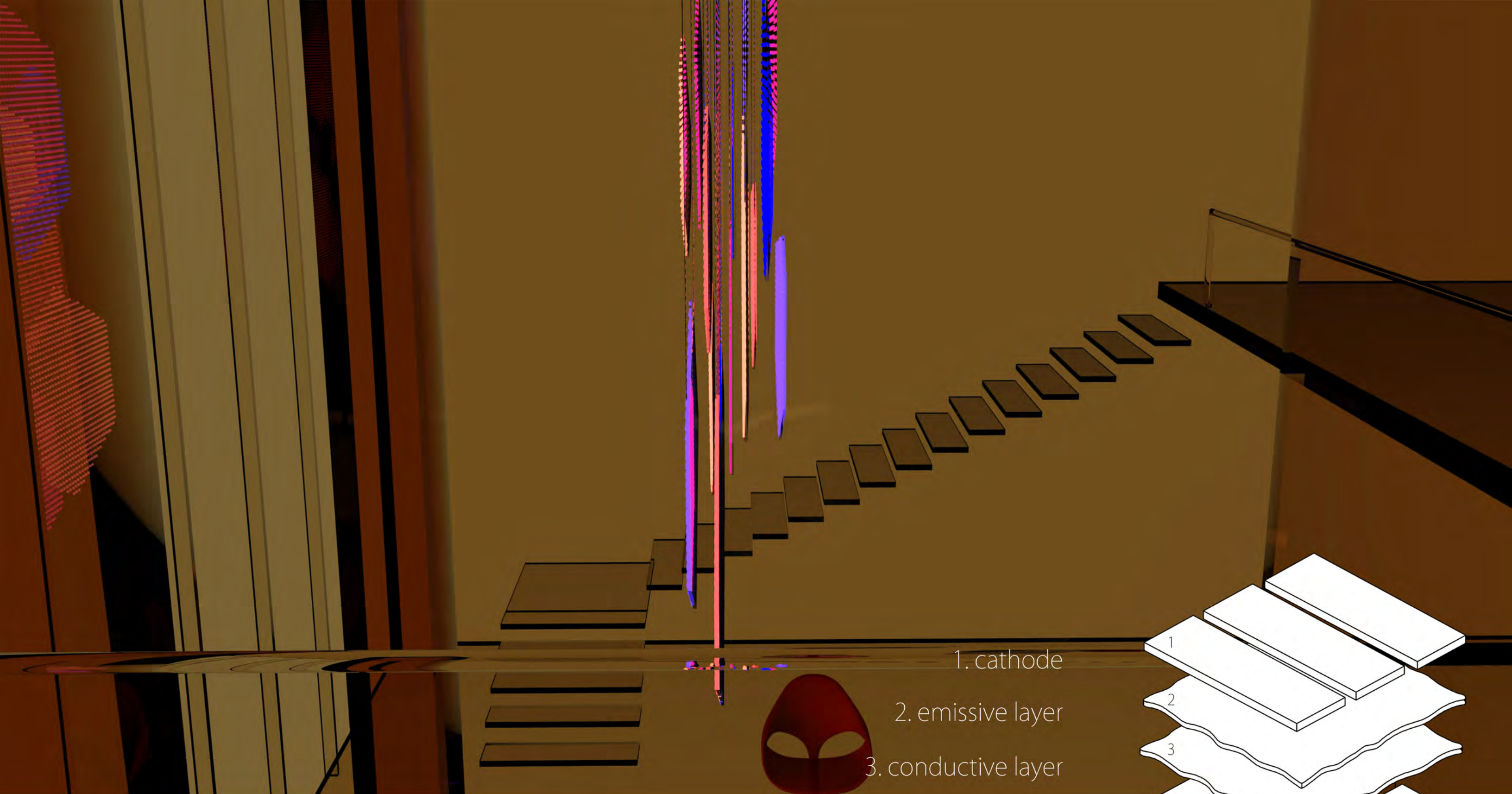


Molecular Assemblage is a series of pendants composed of all OLEDs. Located in the high tech capital of the world, Silicon Valley, this light fixture utilizes the exciting new possibilities of OLED technology. Practically paper thin, available in any size, and capable of a wide range of color output, OLEDs are renovating light systems as we know them. This particular light fixture emphasizes the thinness, color illusion, and transparency made possible by OLEDs. Conceptualized from the molecular components that compromise the organic substrate for OLEDs and the desire to recreate a naturally occurring phenomenon such as iridescence, Molecular Assemblage is a new take on pendant lighting.

molecular assemblage



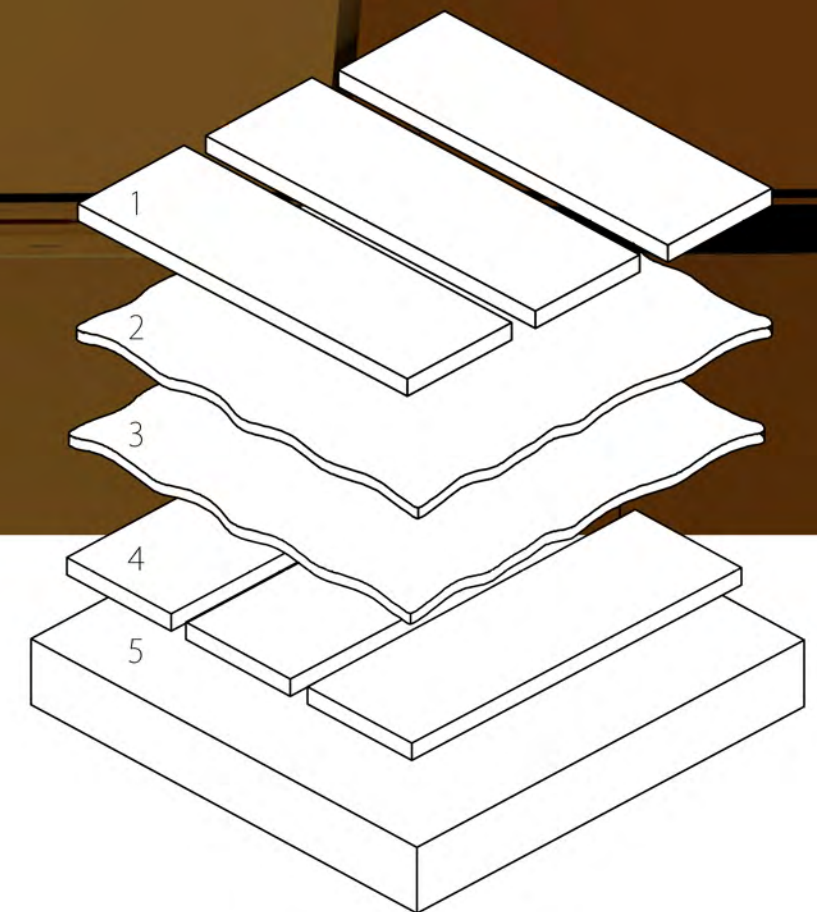
1. cathode

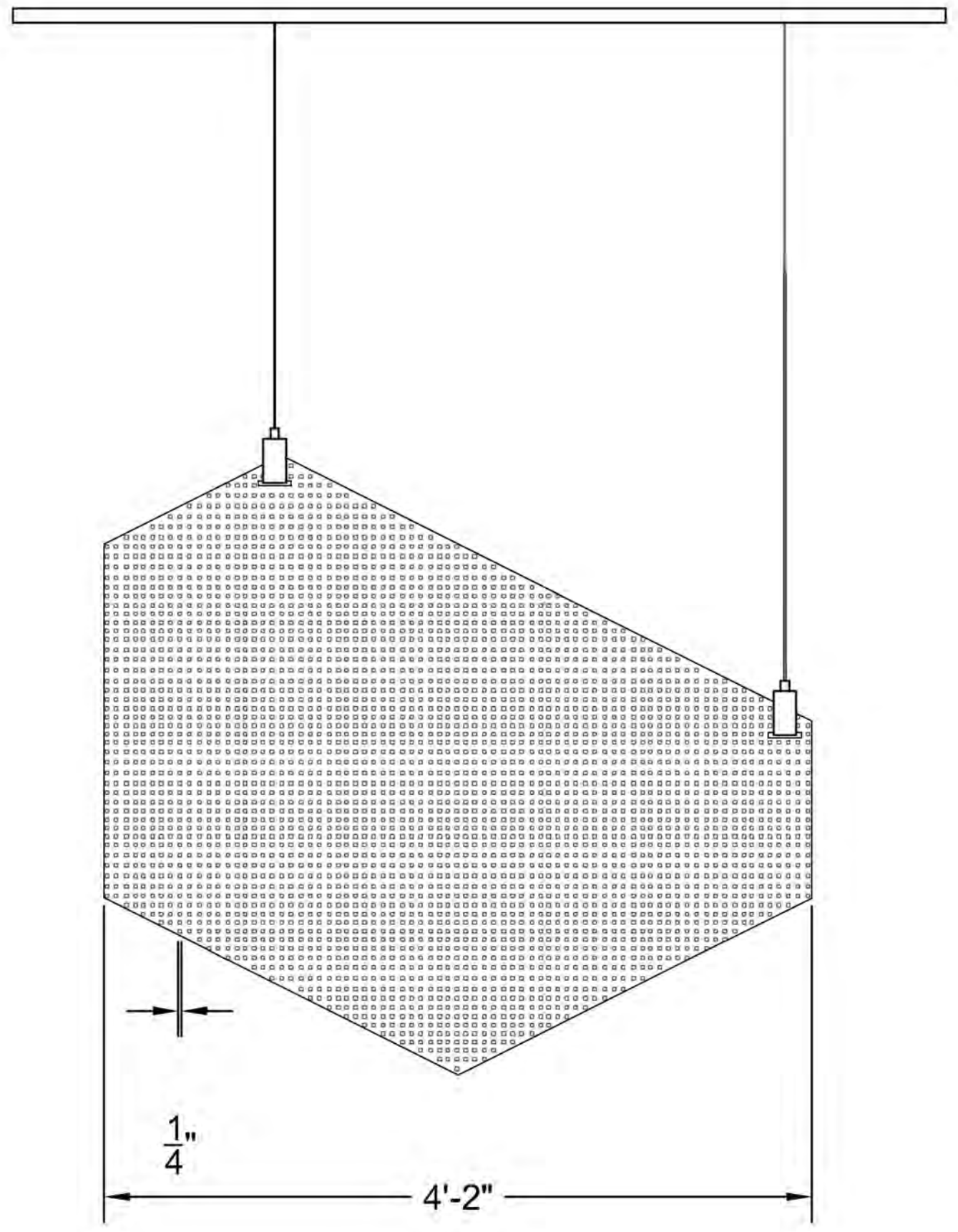
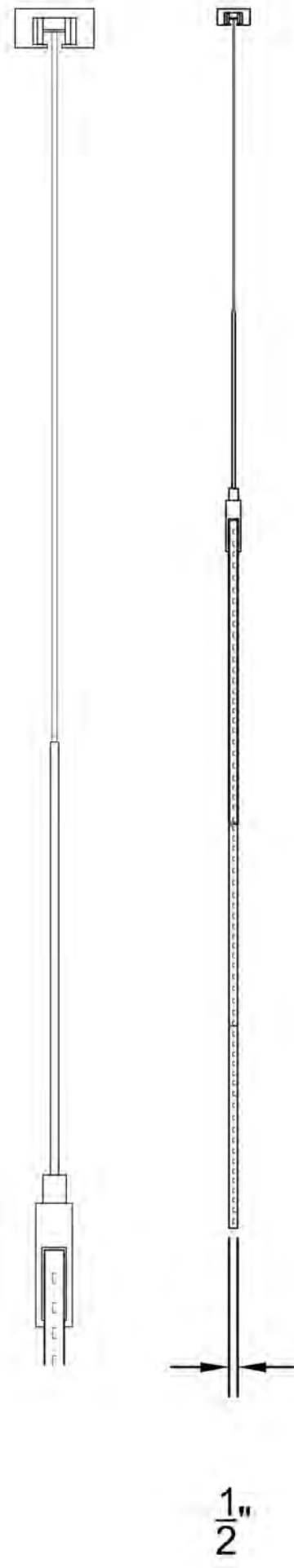
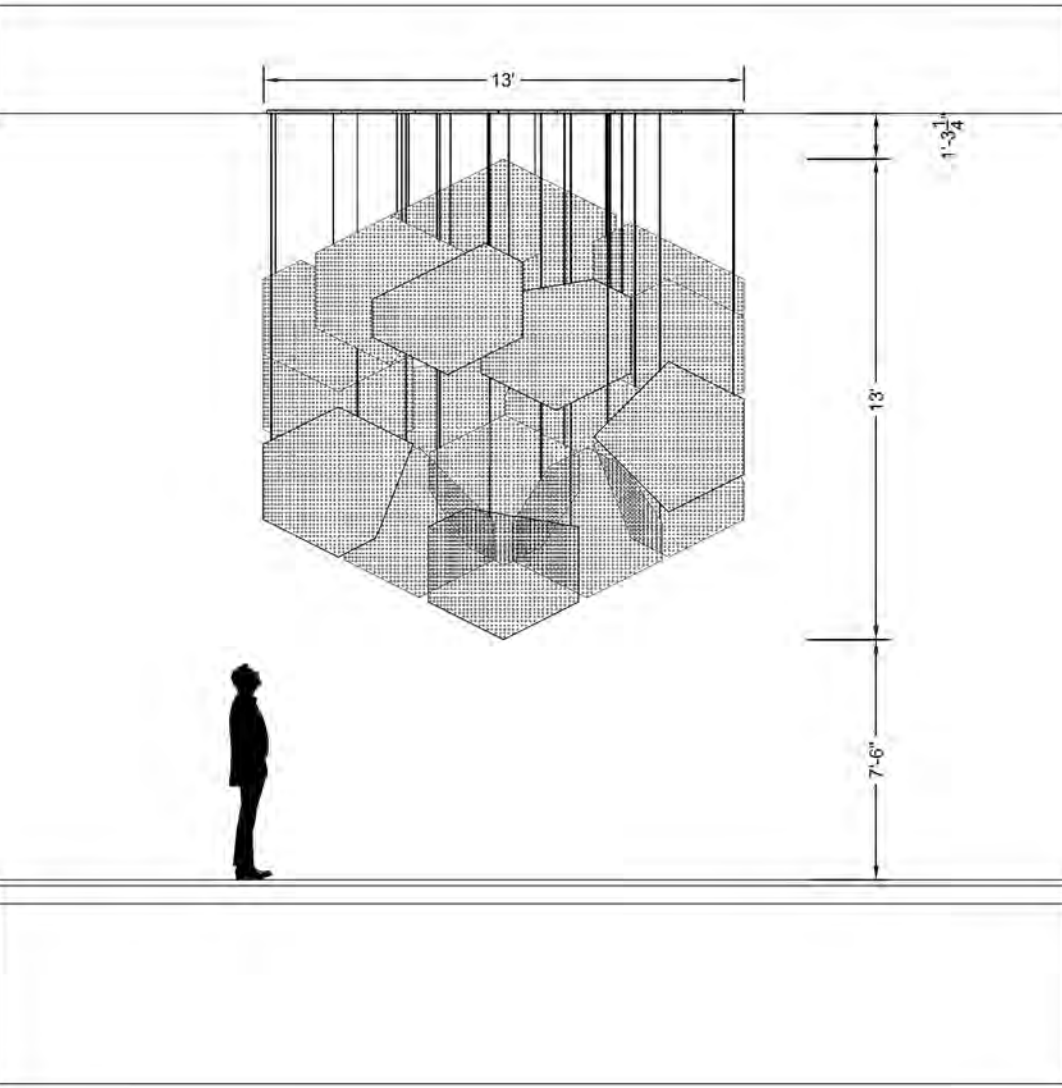
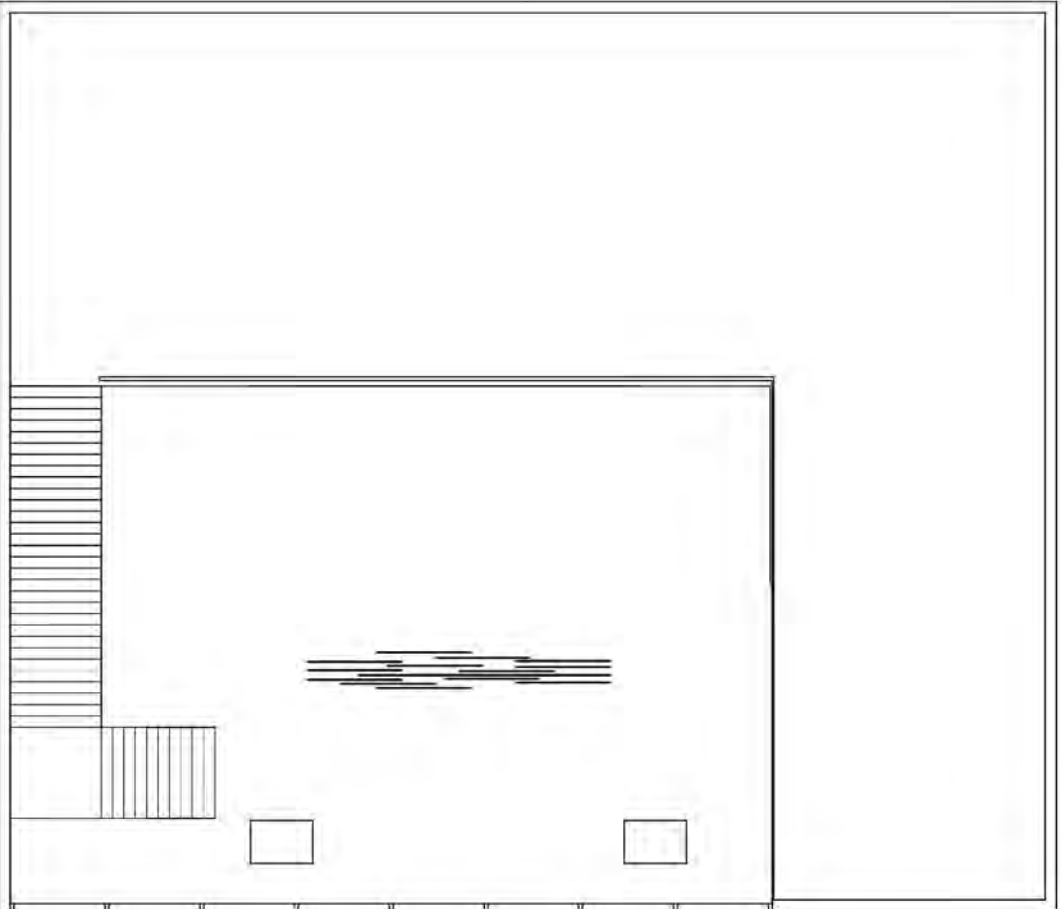
2. emissive layer

3. conductive layer

4. anode

5. substrate





$f_c = cd/d^2$
 $f_c = 9,000/533$
 $f_c = 16$ per panel.
fixture contains 16 panels
OLEDs available through Philips.
OLED diodes are completely programmable;
color changing, image changing. This particular pendant
rotates through the color palette shown to create the
illusion of irredesence.

