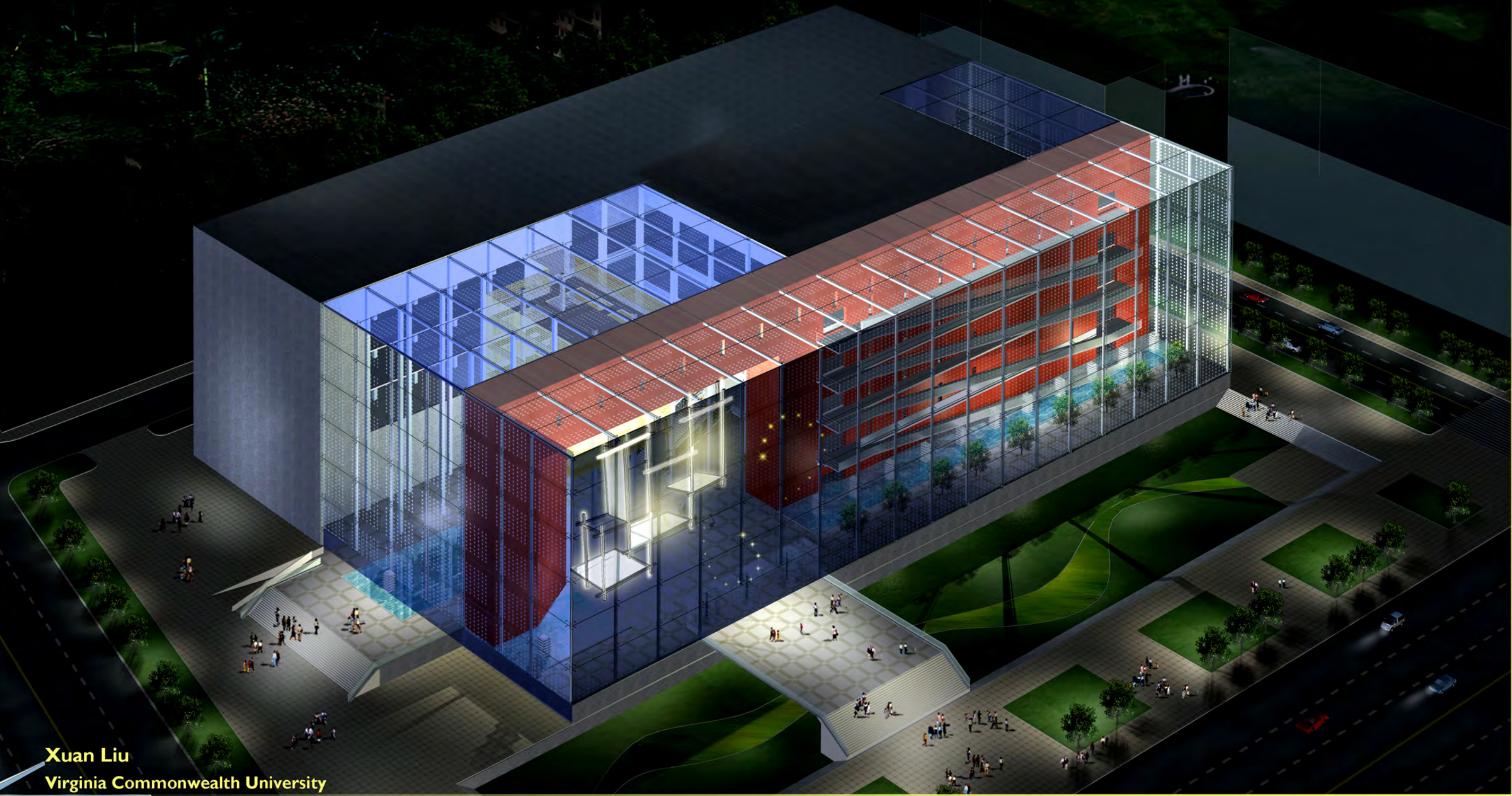




light

The Robert Bruce Thompson annual student light fixture design competition 2013

The Robert Bruce Thompson annual student light fixture design competition 2013

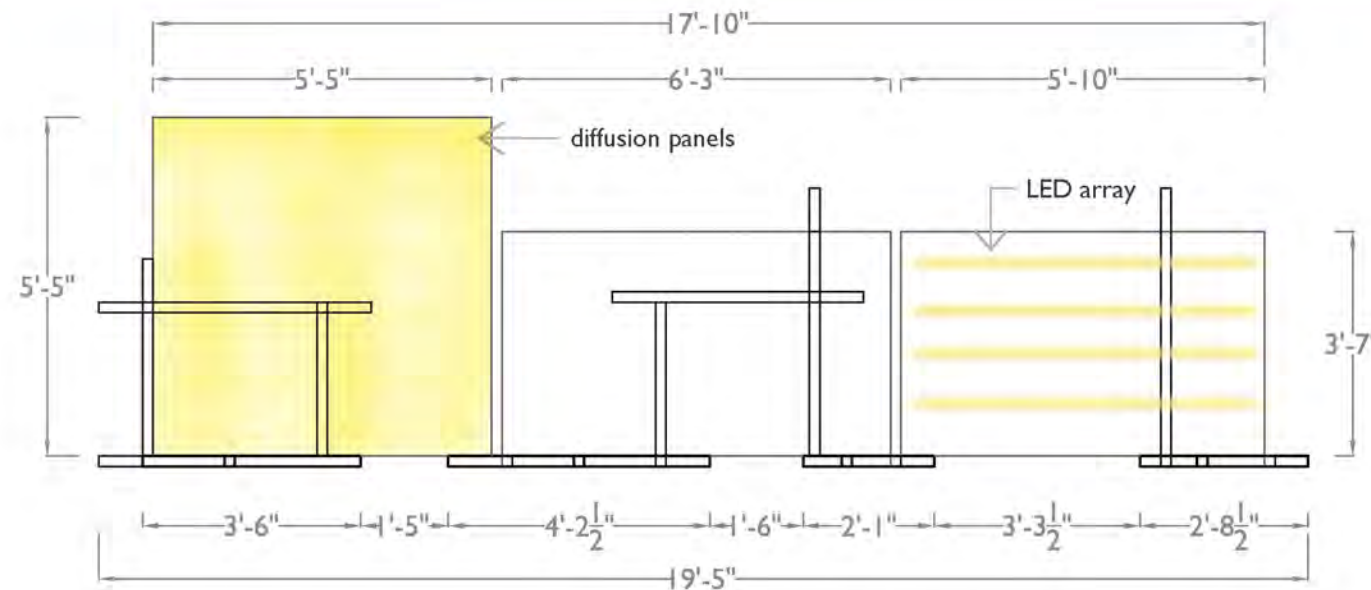
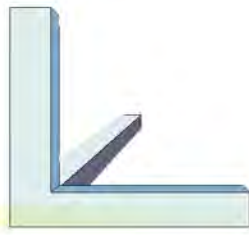


Xuan Liu
Virginia Commonwealth University

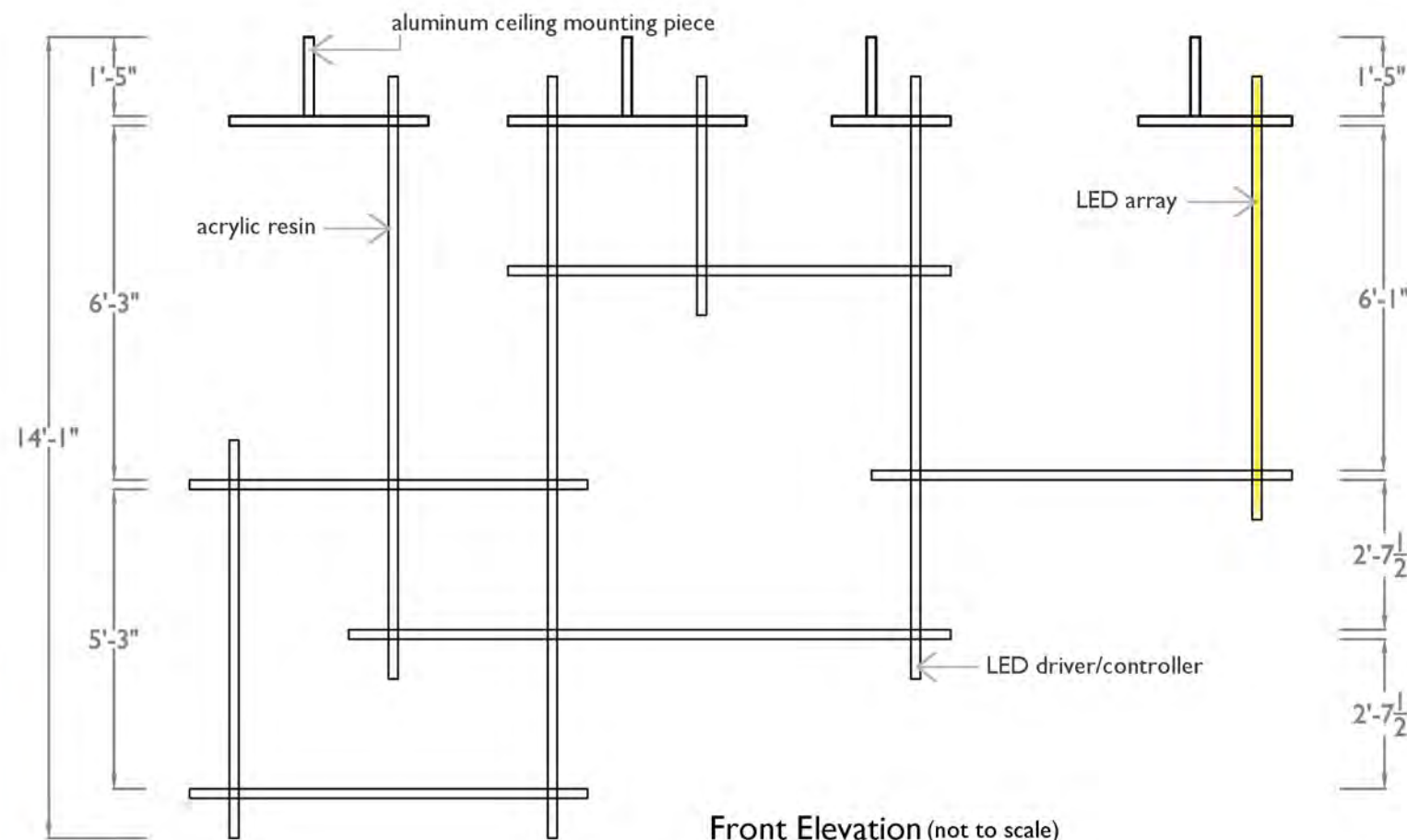
Dimensions



light



Plan (not to scale)



Front Elevation (not to scale)

CONCEPT

The XYZ Light is inspired by Lao Tzu's concept of the Tao "The Tao begot one. One begot two. Two begot three. And three begot the ten thousand things."

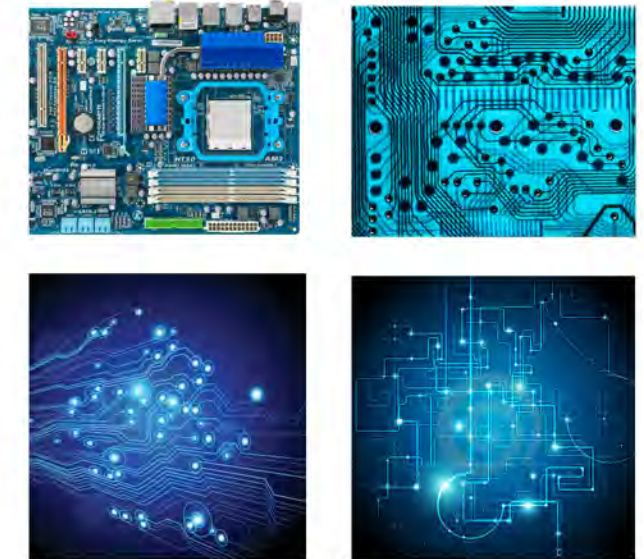
Technology is similar to the Tao. The mother board is one of computing's central elements in technology. It shows the beauty of technology in terms of its order, connection and power.

The XYZ Light is based on linear LED elements arranged along the three dimensional coordinate axes. Elements can be combined to meet a variety of practical needs. Each component is assembled so that together, they create a stable whole; removing one element compromises the integrity of the fixture. By expanding along the three coordinate axes, its volume can be changed as desired.

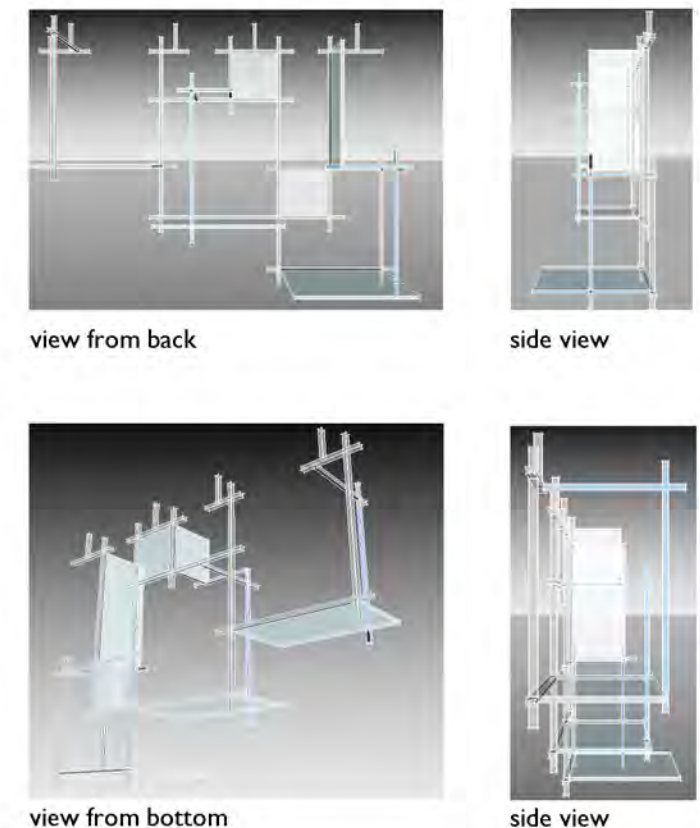
The XYZ Light provides functional and decorative illumination. Emitting a soft glow, the bottom panels of the XYZ Light provide a bright yet relaxing atmosphere for lobby visitors. During company events in the evening, the XYZ Light transforms the lobby's 22 foot high curtain wall into an illuminated stage curtain. Blended with the dark blue night sky, the light and the glazing create an atmosphere of mystery.

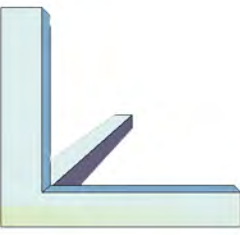
The XYZ Light can be assembled and disassembled easily, facilitating maintenance. Since the LEDs in the linear elements are controlled separately, it is also energy-efficient.

Inspiration



Sketch models

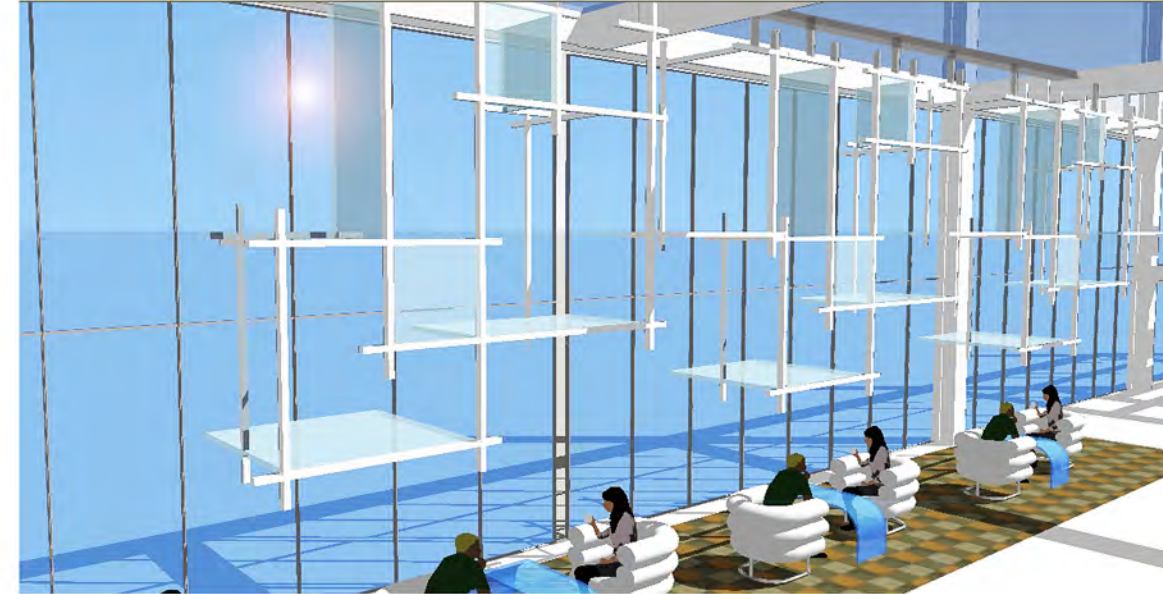




Process Models

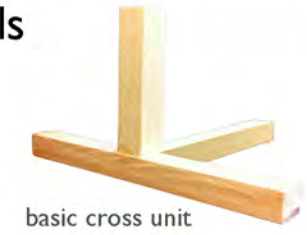
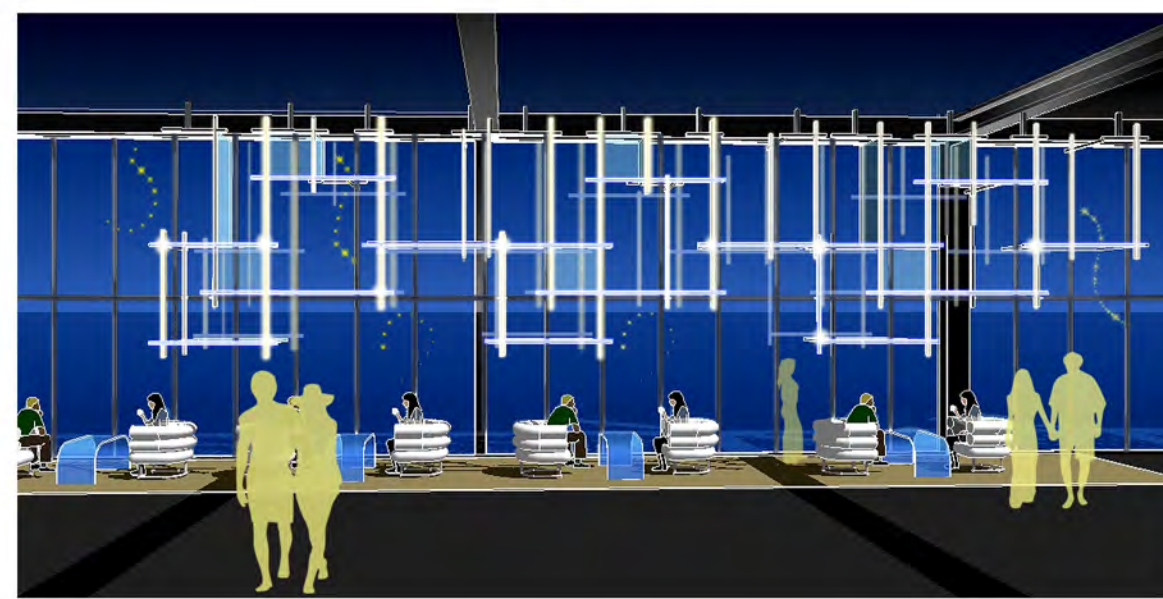


▲ functional lighting
and
▼ decorative lighting



▲ day view
and
▼ night view

FLEXIBILITY



basic cross unit



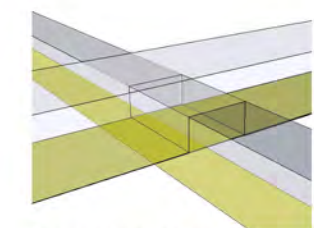
two-unit's combination



three-unit's combination



four-unit's combination



connection way:
fit concave and convex together

